



VPN 2000

IPSEC-COMPLIANT HARDWARE-BASED SECURE VPN GATEWAY

Enigmatec VPN 2000, component of the VPN Solutions from enigmatec GmbH, is an easy to configure VPN gateway that secures data communications for intranets, extranets, and Internet remote access. It integrates easily into existing networks as well as cable, ISDN and DSL modem environments through 10/100BaseT inputs and outputs.

The enigmatec VPN 2000 firmware supports the strongest suite of IPsec network security enforcement features available today.

The dedicated network equipment devices fit into any existing infrastructure to perform secure VPN services for your network. It allows the service provider to remotely configure and manage multiple gateways from any point on the secure VPN.

The enigmatec VPN 2000 full-featured firewall uses technology based on stateful inspection, securing against intruders and DoS (Denial-of Service) attacks.

An extended Traffic-Shaping allows priority to all critical company applications, such as SAP or Voice over IP.

HARDWARE SPECIFICATION

Rack mountable	19": 86,9 mm, 435 mm, 350 mm (H*W*D)
Temperature	5-40 Celsius (40°-105° Fahrenheit)
Humidity	20%-80%, noncondensing
Power requirements	Voltage: 115/230 V AC, Frequency: 60/50 Hz
Power Consumption	60 Watts
Interface	2 x RJ 45 10/100 Base full duplex ports, 1 x RS232C, 9-pin, asynchron

KEY BENEFITS

Scalable architecture

The scalable architecture of the enigmatec VPN2000 supports up to thousand tunnels to the corporate LAN, allowing the corporation to expand its business both in terms of size and diversity.

Long term maintenance

Enigmatec GmbH is committed to provide maintenance and staying at the forefront of IPsec technology for years to come.

Large-scale manageability

The enigmatec VPN 2000 can be configured from anywhere on the secure VPN. For advanced monitoring and capacity planning, it provides VPN information to SNMP managers and syslog servers.

Dynamic VPN

Due to the Dynamic VPN it is possible to connect two branch offices or home offices without fixed IP-addresses (standard DSL-connection), even if the counterpart shouldn't be online (ISDN without flatrate).

Flexible PKI support

An integrated Entrust or GTE CyberTrust public key infrastructure (PKI) enables you to manage large-scale deployments of thousands of users and devices from one location. For deployments that have other PKIs in place, the Enigmatec VPN 2000 also supports certificates from VeriSign, Netscape, Baltimore, RSA Security and Xcert.

Performance

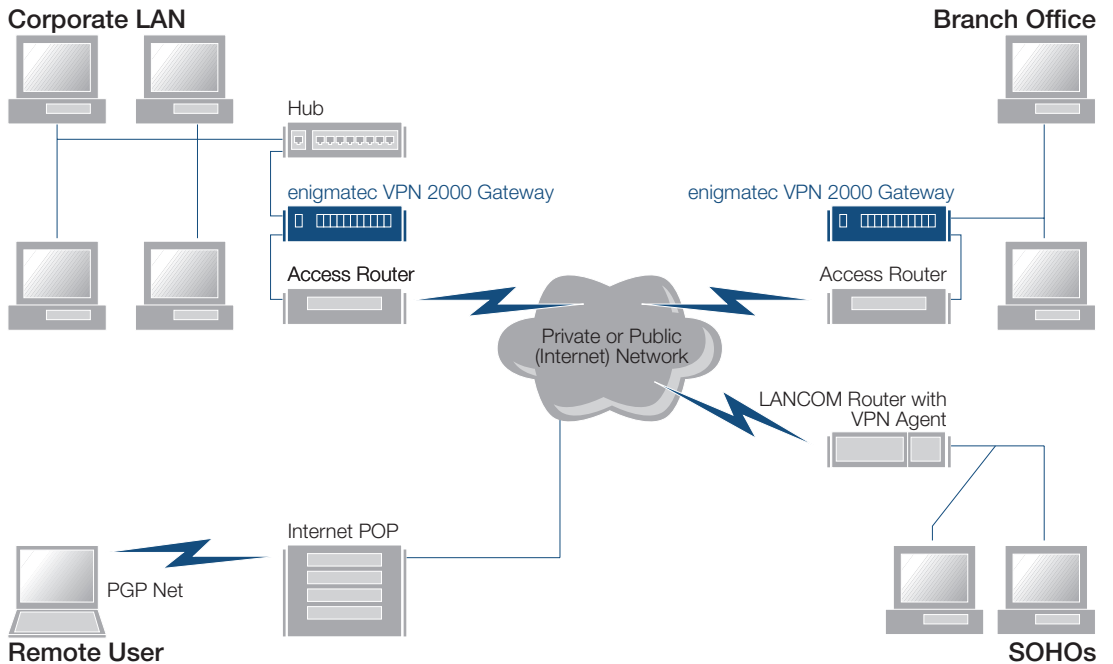
The enigmatec VPN 2000 offers fast, AES, DES and 3DES encryption for wire-rate performance. The Enigmatec VPN gateway supports up to thousands of VPN connections without impacting performance. By allowing clients to access gates using compression, the Enigmatec VPN Gateway helps users achieve better performance for remote access.

Interoperability

The enigmatic VPN 2000 is an IPsec-compliant solution, which is IPsec-certified by the International Computer Security Association (ICSA).



INTEGRATION IN ALL ENVIRONMENTS



KEY FEATURES AT A GLANCE

Authentication

X.509 certificate-based with RSA signatures, PKCS 10/7/12, shared secret

Integrity

HMAC-MD5, HMAC-SHA-1

Capacity

(simultaneous secure sessions)

Up to 1000

Compatibility

According to the standards of RFC2401, RFC2402, RFC2406, RFC2407, RFC2408 and RFC2409.

Compression

Deflate data compression

Protokol Support

TCP/IP, IPsec ESP/AH, LDAPv2, PKIX

Performance

AES 95 Mb/s
Blowfish 95 Mb/s

Key Management

IKE (formerly ISAKMP/Oakley), Diffie-Hellmann

Security Standards

IPsec, IKE, X.509v3, RSA, LDAPv2, PKEX, PKCS 10/7/12, Ipcomp, NIST Digital Signature Standard (FIPS PUB 186), NIST Data Encryption Standard (FIBS PUB 46-1)

Encryption

AES, DES, 3DES, Blowfish, CAST-128, RC5 (optional), IDEA (optional)

Certifications

ICSA-IPsec